

Which external agencies does the School use to support my child's SEND needs?

Education

- Educational Psychology
- STEPs—Educational Audiologist
- STEPs ASD Team

Health

- Speech and Language Therapy Team.
- Community Paediatrician
- School Health
- Derby Children's Audiology
- Children and Adolescent Mental Health Services
- Nottingham Auditory Implant Programme
- Occupational Therapy
- Physiotherapy

Care

- Social Care
- Multi-agency Team Workers

What have OFSTED and the LA SEND Peer Review Team said about inclusion at Reigate Park?

In March 2018 OFSTED said:

'This is a highly inclusive school.'

In September 2020 LA Peer Review Team said:

'Reigate is a very inclusive school which holds high aspirations for all students regardless of their needs.'



SEND Contacts

The school's SEND Policy/ SEND Information Report /admissions information and School Offer is available on the school's website:

www.reigate.theharmonytrust.org

If you require any further information please do not hesitate to contact a member of our SEND Team:

Sally Harrison, Assistant Principal / SENCO via email at: sharrison02@reigate.theharmonytrust.org

Kate Pearce, Assistant Principal, EYFS/KS1 SEND Phase Lead via email: kpearce01@reigate.theharmonytrust.org

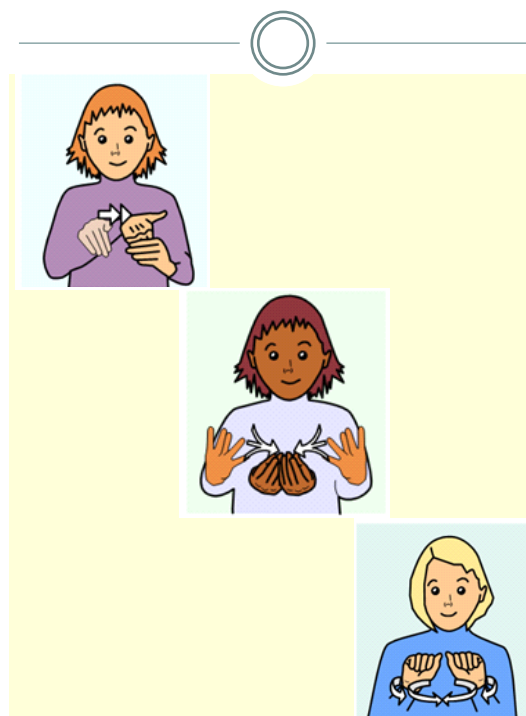
TEL: 01332 298969

Derby City Council SEND Local offer : <https://www.derby.gov.uk/education-and-learning/special-education-needs-disabilities/>



Inclusion

@ Reigate Park Primary Academy 2022—2023



Reigate Park Primary Academy

Reigate Park Primary Academy is a larger than average mainstream school of 396 pupils which was newly built in June 2015. It is situated within the Mackworth area of Derby.

The school is built on 2 levels with a lift available. Reigate Park joined Harmony Trust in September 2018. We educate children within the primary age range, 3 -11 years. Children with an Education, Health and Care Plan, who are deaf, can access enhanced resources at Reigate in order to ensure their provision is met within a mainstream classroom.

Reigate Park Primary Academy is an approved Signature British Sign Language (BSL) Centre and teaches BSL as part of our curriculum to all Key Stage 2 Pupils on a weekly basis. Opportunities to learn BSL vocabulary through stories and songs are also planned for all children in EYFS and KS1.

What should I do if I'm concerned about my child?

At Reigate Park we actively encourage parents to be involved in their children's education. Parents will be involved in all stages of the Special Educational Needs (SEND) procedure.

Parents who are concerned about any issues regarding SEND should, in the first instance, contact school and discuss their concerns with the Class Teacher/Special Educational Needs Coordinator (SENCO)/SEND Phase Leaders or any other member of staff involved with their child's education.



Are the staff at Reigate fully trained to support my child's SEND needs?

Our staff are trained in the following:

- National Award for SENCOs,
- Use of Epi-pens.
- Speech and Language Therapy.
- Our Teachers of the Deaf are fully qualified.
- All staff working with deaf children have additional qualifications in British Sign Language.
- Assistant Principal/SEND Lead trained in Lego Therapy/Social Stories/Comic Strip Conversations

How will my child be supported on a daily basis in class?

- All classes and the hall have access to a Soundfield system
- Some deaf pupils have personal radio aids.
- All classes use a visual approach to learning, including using symbols to support children's understanding
- All children have access to concrete (practical) resources in maths.
- All children with SEND have a One Page Profile and a personalised provision map to ensure the provision they receive meets their individual needs.
- All children with SEND have an Individual Plan (IP) outlining SMART targets for the child to work towards each term.



Are there any small group/1:1 sessions available for my child?

All children with SEND are taught within a mainstream class. They may also receive targeted small group/1:1 support including:

Communication and Interaction

- Speech and Language Programmes.
- Speechlink
- Social Stories
- Early Talk Boost/Talk Boost
- Social communication skills group.

Cognition and Learning

- Class teacher interventions.
- Accelerated Reader
- Targeted Individual Plan (IP) work
- Pre and post teaching

Social and Emotional Difficulties

- Meet and Greet
- Sensory Room Access
- Empathic Behaviour Plans
- Key ring Strategies
- Lego Therapy
- Anxiety Gremlin Intervention

Sensory and Physical Needs

- Individual Health Care Plans
- Medical One Page Profiles
- Specialist Teacher of the Deaf Support
- Individual Occupational/physio Therapy Programmes
- Physical Literacy
- Access to Sensory Circuits

